

Adjustment/Maintenance

Adjust printing quality and conduct machine maintenance.

- Copy Density Adjustment ...8-52
- Send/Box Density Adjust ...8-53
- Print Density ...8-53
- Drum Refresh ...8-53
- Correcting Fine Black Lines ...8-54
- System Initialization ...8-55
- Display Brightness ...8-55
- Silent Mode ...8-55
- Auto Color Correction...8-56
- Color Registration...8-56
- Setting the Color Calibration Cycle...8-60
- Gray Adjustment...8-60
- Color Calibration...8-62
- Developer Refresh...8-63
- Laser Scanner Cleaning...8-63

NOTE: If user login administration is enabled, you can only change the settings by logging in with administrator privileges.

Copy Density Adjustment

Adjust copy density. Adjustment can be made in 7 levels both in auto and manual density modes.

Use the procedure below to adjust the copy density.

- 1** Press the **System Menu** key.
- 2** Press [√], [Adjustment/Maintenance] and [Next] of *Copy Density Adjustment*.
- 3** Press [Change] of *Auto* or of *Manual*.
- 4** Press [-3] - [+3] (Lighter-Darker) to adjust density.
- 5** Press [OK].

Send/Box Density Adjust

Adjust scan density when sending or storing the data in Document Box. Adjustment can be made in 7 levels both in auto and manual density modes.

- 1 Press the **System Menu** key.
- 2 Press [✓], [Adjustment/Maintenance] and [Next] of *Send/Box Density Adjust*.
- 3 Press [Change] of *Auto* or of *Manual*.
- 4 Press [-3] - [+3] (Lighter-Darker) to adjust density.
- 5 Press [OK].

Print Density

Adjust print density. Adjustment can be made in 5 levels.

Use the procedure below to adjust the print density.

- 1 Press the **System Menu** key.
- 2 Press [✓], [Adjustment/Maintenance] and [Change] of *Print Density*.
- 3 Press [1] - [5] (Lighter-Darker) to adjust density.
- 4 Press [OK].

8

Drum Refresh

Refresh the drum when image blur or white spots appear on images in copies.

CAUTION: Drum Refresh cannot be performed while printing. Execute Drum Refresh after the printing is done.

Use the procedure below to refresh the drum.

- 1 Press the **System Menu** key.
- 2 Press [✓], [Adjustment/Maintenance].
- 3 Press [Next] of *Drum Refresh*.

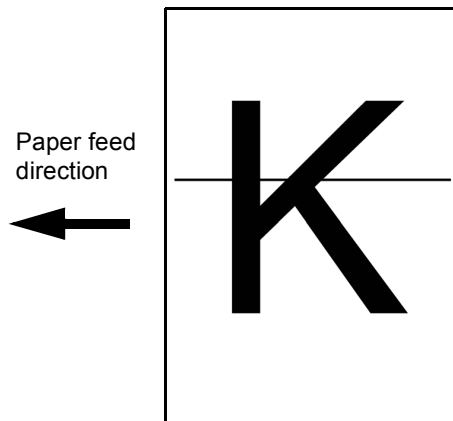


4 Press [Execute] to Drum Refresh.

5 After Drum Refresh is completed, press [OK] to return to the *Adjustment/Maintenance* screen.

Correcting Fine Black Lines

Correct fine black lines (black streaks caused by contamination), which may appear on the copies, when the optional document processor used.



The table below shows the available settings.

Item	Description
Off	No correction performed.
On(Low)	Correction performed. The reproduction of the image becomes lower when using Off.
On(High)	Correction performed. Select this item if black streak remains after using On (Low). The reproduction of the image becomes lower when using On (Low).

NOTE: Using Correcting Fine Black Line can impair reproduction of fine characters. It is recommended to keep the default ([Off]).

Use the procedure below to specify the setting for correcting fine black lines.

- 1 Press the **System Menu** key.
- 2 Press [∨], [Adjustment/Maintenance] and [Change] of *Correcting Black Line*.
- 3 Press [Off], [On(Low)] or [On(High)].
- 4 Press [OK].

System Initialization

Initialize the hard disk mounted on the machine to return to the default mode.

Refer to *System Initialization on page 8-85* about the initialization procedures.

Display Brightness

Set the brightness of the touch panel.

Use the procedure below to adjust the display brightness.

- 1 Press the **System Menu** key.
- 2 Press [∨], [Adjustment/Maintenance] and [Change] of *Display Brightness*.
- 3 Press [1] - [4] (Darker- Lighter) to adjust brightness.
- 4 Press [OK].

8

Silent Mode

Make the machine run more quietly. Select this mode when the running noise is uncomfortable.

Use the procedure below to set Silent mode.

- 1 Press the **System Menu** key.
- 2 Press [∨], [Adjustment/Maintenance] and [Change] of *Silent Mode*.
- 3 Press [Off] or [On].
- 4 Press [OK].

Auto Color Correction

This setting allows you to adjust the detection level used by the machine to determine whether the original is color or black and white during Auto Color Mode. Setting a lower value will result in more originals being identified as color, while a larger value will tend to increase the number of originals being identified as black and white.

Use the procedure below to set the Auto Color Detection Level.

- 1 Press the **System Menu** key.
- 2 Press [∨] > [Adjustment/Maintenance] > [∨] > [Change] of *Auto Color Correction*.
- 3 Press one of keys [1] to [5] (Color - B & W) to set the detection level.
- 4 Press [OK].

Color Registration

When first installing the machine or moving it to a new location, color drift during printing may occur. Use this function to correct the color position of each of cyan, magenta and yellow to resolve color drift.

Normal registration and detailed settings are available for Color Registration. Color drift can be largely corrected through normal registration. However, if it is not resolved or to perform more detailed settings, use the detailed settings.

NOTE: To perform color registration, verify that either 11 × 8 1/2" or A4 paper is loaded into a cassette.

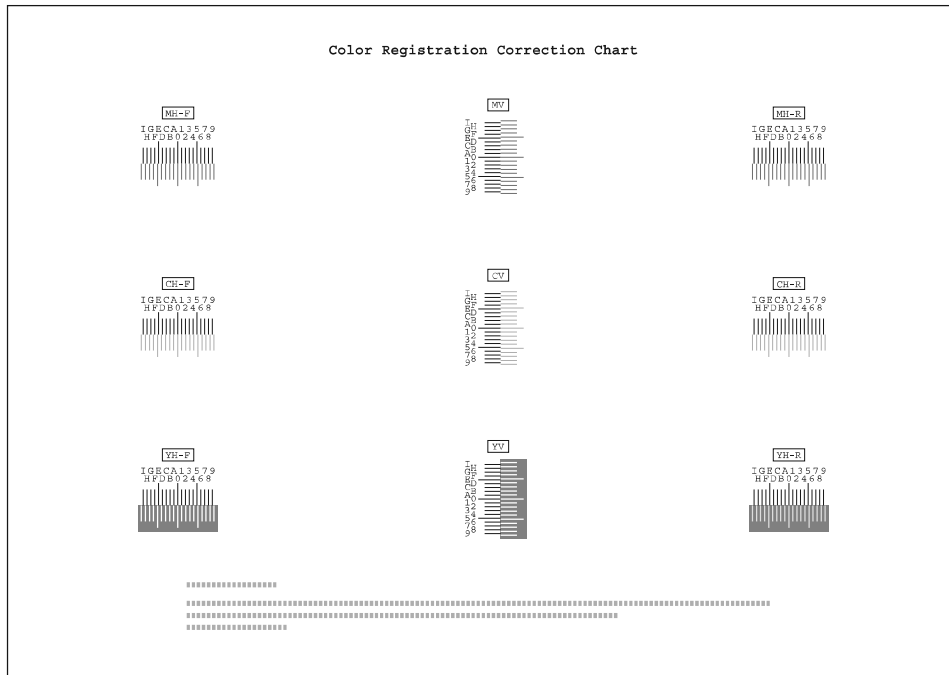
Normal Registration

Follow the steps below to correct normal color drift.

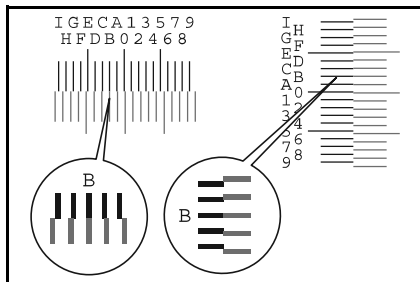
- 1 Press the **System Menu** key.
- 2 Press [∨], [Adjustment/Maintenance], [∨] and then [Next] of *Color Registration*.
- 3 Press [Print] of *Chart*. A chart is printed.

On the chart, for each of **M** (magenta), **C** (cyan) and **Y** (yellow), 3 chart types are printed on one sheet: **H-F** (left), **V** (right), **H-R** (horizontal).

Chart Example



8



4 Find the location on each chart where 2 lines most closely overlap each other. If this is the 0 position, registration for that color is not required. For the illustration, B is the appropriate value.

- 5 Press [Next] of *Registration*.
- 6 Press [Change] for the chart to be corrected.
- 7 Press [+] or [-] to enter the values read from the chart and press [OK].

Press [+] to increase the value from 0 to 9. To decrease, press [-].

By pressing [-], the value changes from 0 to alphabetic letters, going from A to I. To move in the reverse direction, press [+].

You cannot use the numeric keys to enter these values.

- 8 Repeat steps 6 and 7 to enter the registration values for each chart.
- 9 Press [Execute] after all values have been entered. Color registration begins.
- 10 Press [OK] after color registration is complete.

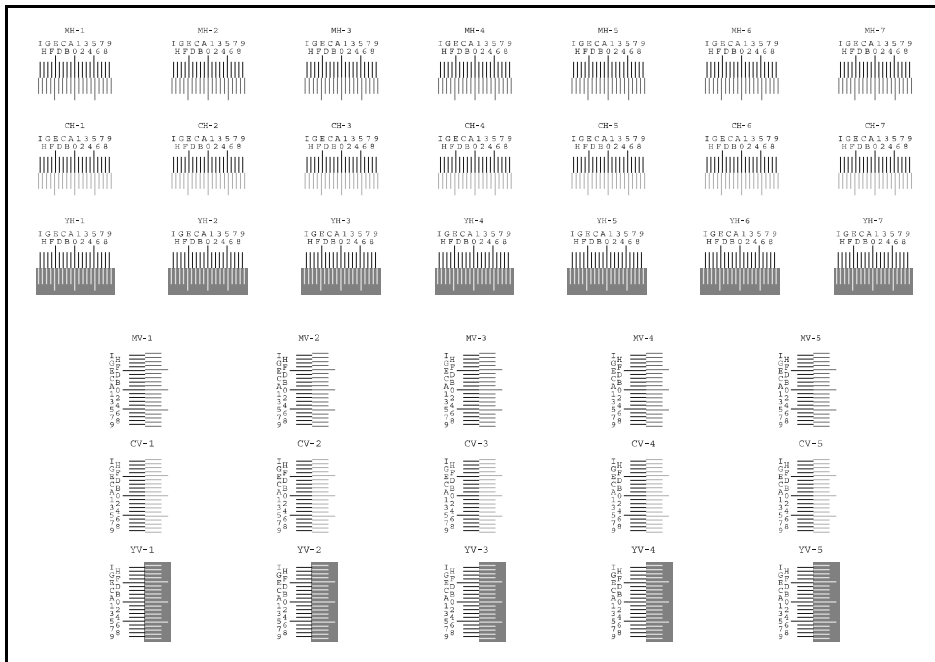
Detailed Settings

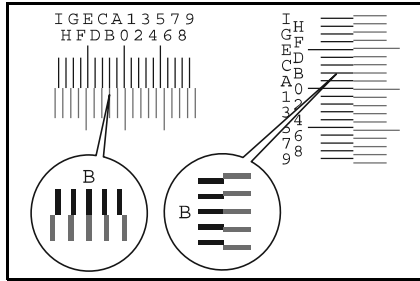
Follow the steps below to perform more detailed correction.

- 1 Refer to Steps 1-2 of *Normal Registration* to display the *Color Registration* screen.
- 2 Press [Detail].
- 3 Press [Print] of *Chart (Details)*. A chart is printed.

On the chart, for each of **M** (magenta), **C** (cyan) and **Y** (yellow), charts for **H-1** to **7** and **V-3** are printed.

Chart Example





- 4 Find the location on each chart where 2 lines most closely match. If this is the 0 position, registration for that color is not required. For the illustration, B is the appropriate value.

From charts **V-1** to **V-5**, read only the values from **V-3** (center).

- 5 Press [Next] of *Registration (Details)*.
- 6 Press [Change] for the chart to be corrected.
- 7 Press [+] or [-] to enter the values read from the chart and press [OK].

Press [+] to increase the value from 0 to 9. To decrease, press [-].

By pressing [-], the value changes from 0 to alphabetic letters, going from A to I. To move in the reverse direction, press [+].

You cannot use the numeric keys to enter these values.

- 8 Repeat steps 6 and 7 to enter the registration values for each chart.
- 9 Press [Execute] after all values have been entered. Color registration begins.
- 10 Press [OK] after color registration is complete.

8

Setting the Color Calibration Cycle

After Auto Clear has been activated, or during printing or while processing Color Registration, *Performing Color Calibration... Remaining: 50 seconds* may be displayed. While this message is displayed, the machine makes adjustments to maintain image quality. Wait until the message disappears.

Set the color calibration cycle here. The setting items are as follows.

Item	Description
Auto	Automatically sets the cycle for color calibration.
Short	Sets a short color calibration cycle and increases the number of times performed, with priority to image quality.
Standard	Sets a standard color calibration cycle, compromising between image quality and downtime for processing.
Long	Sets a long color calibration cycle and decreases the number of times performed, to ensure minimal downtime.

- 1 Press the **System Menu** key.
- 2 Press [∨], [Adjustment/Maintenance], [∨] and then [Change] of *Color Calibration Cycle*.
- 3 Select [Auto], [Short], [Standard] or [Long].
- 4 Press [OK].

Gray Adjustment

After prolonged use, or from the effects of surrounding temperature or humidity, the hue of printed color output may shift or color drift may occur. Use this function to correct color settings when the color of a finished copy does not match the original. Perform color calibration before using gray adjustment (see *page 8-60*). Use gray adjustment when the color is not enhanced even after performing color calibration.

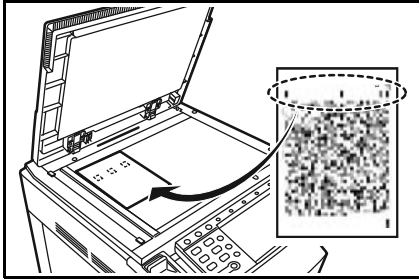
Normal and detailed gray adjustment is available. While normal adjustment will almost completely eliminate errors in color tones, you can also use detailed adjustment for stubborn color tone problems or where more precise adjustment is needed.

NOTE: To perform gray adjustment, verify that either 11 × 8 1/2" or A4 paper is loaded into a cassette.

Normal adjustment

Use the procedure below for normal adjustment.

- 1 Press the **System Menu** key.
- 2 Press [✓], [Adjustment/Maintenance], [✓] and then [Next] of *Gray Adjustment*.
- 3 Press [Execute]. A color pattern is printed. Check that the number "1" and one magenta box are printed in the top right corner of the color pattern.
- 4 As shown in the illustration, place the printed side down on the platen with the three black boxes aligned to the top.



- 5 Press the **Start** key. The color pattern is read and adjustment begins.
- 6 The second color pattern is output. Check that the number "2" and two magenta boxes are printed in the top right corner of the color pattern and then repeat steps 4 and 5.

8

IMPORTANT: Always check the number of magenta boxes and the number printed in the top right corner of the color pattern before placing it on the platen. Do not mistake the first and second color patterns.

- 7 Press [OK] in the adjustment end confirmation screen.

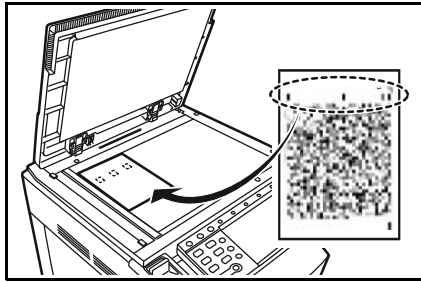
Detailed Adjustment

A total of 4 color pattern pages (No. 1 to 4) are printed during detailed adjustment. As with normal adjustment (page 8-60), the printed color patterns are read sequentially during detailed adjustment.

IMPORTANT: The numbers 1 to 4 and a corresponding number of magenta boxes are printed at the top right of each of the printed color pattern. Always check the number of magenta boxes and the printed number before placing each color pattern on the platen.

Use the procedure below to carry out detailed adjustment.

- 1 Refer to steps 1 to 2 in normal adjustment to display the *Gray Adjustment* screen.
- 2 Press [Detail].
- 3 Press [Execute]. A color pattern is printed.



Check that the number "1" and one magenta box are printed in the top right corner of the color pattern.

- 4 As shown in the illustration, place the printed side down on the platen with the three black boxes aligned to the top.

- 5 Press the **Start** key. The color pattern is read and adjustment begins.

- 6 The second color pattern is printed.

Check that the number "2" (to "4") and two (to four) magenta boxes are printed in the top right corner of the color pattern and repeat steps 4 to 6 three times to read color patterns 2, 3 and 4 in sequence.

- 7 Press [OK] in the adjustment end confirmation screen.

Color Calibration

After prolonged use, or from the effects of surrounding temperature or humidity, the hue of printed color output may shift or color drift may occur. Using this function enables printing in the most appropriate color by adjusting hue and color drift in detail. Use gray adjustment when the color is not enhanced even after performing color calibration (see *page 8-60*). If the hue and color are not enhanced, use color registration (see *page 8-56*).

- 1 Press the **System Menu** key.
- 2 Press [✓], [Adjustment/Maintenance], [✓] and then [Next] of *Color Calibration*.
- 3 Press [Execute]. Color calibration begins.
- 4 Press [OK] after color calibration is complete.

Developer Refresh

When the printing is too light or incomplete, even though there is enough toner, refresh the developer.

- 1 Press the **System Menu** key.
- 2 Press [✓], [Adjustment/Maintenance], [✓] and then [Next] of *Developer Refresh*.
- 3 Press [Execute]. Developer refresh begins.

NOTE: Waiting time may be longer when the toner is refilled during developer refresh.

- 4 Press [OK] after developer refresh is complete.

Laser Scanner Cleaning

If white or color streaks appear on images, perform Laser Scanner Cleaning.

- 1 Press the **System Menu** key.
- 2 Press [✓], [Adjustment/Maintenance], [✓] and then [Next] of *Laser Scanner Cleaning*.
- 3 Press [Execute]. Laser scanner cleaning begins.
- 4 Press [OK] after laser scanner cleaning is complete.